

 e-hallpass

Simplify hall passes and strengthen campus safety



Traditional hall pass systems may have worked for years, but they fall short when it comes to meeting the needs of a modern school. If you need to account for students during a lockdown, for example, an outdated hall pass process will make it more difficult than it needs to be.

Or maybe you want to limit vaping and vandalism, or hold students accountable for missing instructional time. Either way, manual hall pass processes provide no way to combat or even collect data about these issues. You could try to add some type of tracking to your paper or other analog hall pass process, but this just creates more paper to keep track of and more work for teachers and staff.

With e-hallpass, an electronic hall pass system designed for K-12 schools, administrators and teachers finally have an easier way to issue and track hall passes. e-hallpass helps admins and teachers track how many passes are in use and by whom to improve student accountability and shore up safety concerns. With e-hallpass, you can:

- Know what students are using hall passes, and who's in the hall at any given time
- Identify where students are by building or room in an emergency situation
- Limit passes by student or location to minimize misuse
- Streamline appointment scheduling for teachers
- Regain control over hall pass usage to increase instructional time

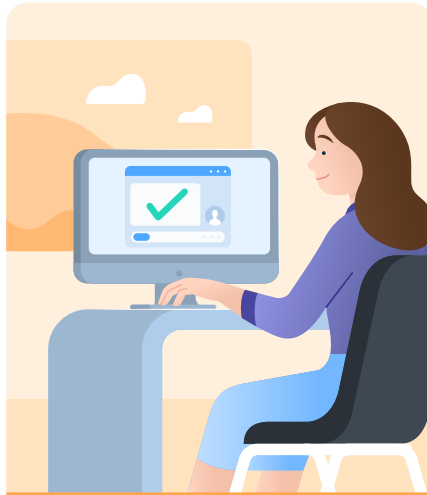
"e-hallpass is a product that I honestly don't know how we would function without. With countless decisions to make throughout the day, e-hallpass provides tools that allow our teachers and admin team to monitor our building effectively, increase our safety, have accurate data for decision-making, and have our pulse on movement throughout the building at a moment's notice."

Stacie Kegley

Instructional Coach, Ballyshannon Middle School

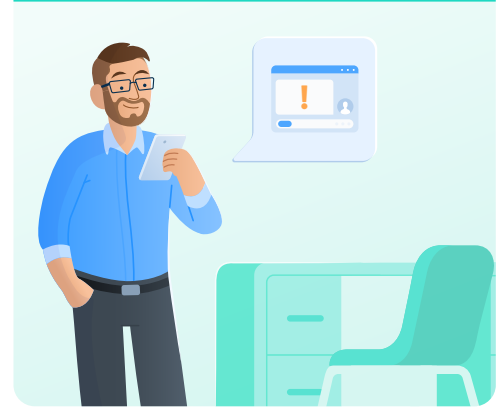
How e-hallpass works

Students request a hall pass from a teacher from their school device, or their own device. e-hallpass automatically checks to see if the student has a pass limit, the requested destination is closed or full, or if there's another student in the halls that student isn't supposed to be in contact with.



Teachers can approve or deny passes in seconds, without disrupting their lesson.

School administrators can pull custom reports for pass takers, pass granters, and more to immediately know what students are going where, and how frequently.



Student View

Departing From:

John Teacher Edit

TEST TEACHER KAY ADMIN JOHN TEACHER TEACHER KEFFER + ADD FAVORITE TEACHER/ROOM ?

Destination:

Restroom 2nd floor Edit

RESTROOM 2ND FLOOR LOCKER MAIN OFFICE STAFF KEFFER HUB/LIBRARY

Submit

Students request passes by indicating where they're departing from and their destination

Teacher View

The screenshot shows the Teacher View dashboard. At the top, there are navigation tabs for 'My Passes', 'All Passes', and 'Today's Appointments'. A 'Pause Dashboard' button and a 'Download CSV' link are also visible. A search bar and an 'Advanced Search' button are on the right. Below the navigation, there are filter buttons for 'Active', 'Both', and 'Ended'. A 'Filters' section includes checkboxes for 'Waiting Approval', '05+Min', 'System Ended', 'Extended Passes', and 'Edited'. A 'Basic View' toggle is set to 'On'. The main table displays pass information with columns for Student, Out time, In time, Total, Type, and Status/Comments. Two rows are highlighted: one for 'Kaitlin Student1' with a 'WAITING APPROVAL' status and 'Main Office' location, and another for 'Beckett Student5' with an 'ACTIVE' status and 'Nurse' location. The 'Beckett Student5' row shows a return time of 10:57 AM and an 'END' button.

Student	Out time	In time	Total	Type	Status/Comments
WAITING APPROVAL Kaitlin Student1 has 0 passes today	Ayla Last Name	Main Office		STU	1 Pick up lunch.
ACTIVE Beckett Student5 has 2 passes today	Julie's Demo School Simulate 10:56 AM	Nurse 10:57 AM Julie's Dem.		Nurse Julie's Demo School Simulate	TCH 0

Passes that are **Waiting Approval** can be approved or denied by the teacher

Passes that are **Active** will show their time stamp information on the teacher dashboard

Benefits

- Improve campus safety by knowing who is out of class and where they're going
- Maximize instructional time by reducing unnecessary hall pass usage and class interruptions
- Keep students accountable for their hall pass usage and reduce vandalism, mischief, and vaping
- Better investigate bullying and vandalism by knowing which students were out of class during a specific time period
- Know which students are out of class and where they are in emergency situations
- Simplify record-keeping for teachers, front desk staff, and administrators

Features

Student Pass Limits

- Give all students a daily pass limit, set different limits per grade level, or restrict individual students for disciplinary reasons.
- Prevent specific students or groups of students from being out of class at the same time.

Location Pass Limits

- Prevent students from going to rooms that are full, or when teachers or resources are unavailable.

Live Dashboard

- Know who's out of class with an automatically updating dashboard.
- Identify students who are out of class for extended periods.

Appointment Passes

- Make it easier for teachers to schedule student appointments.
- Schedule a pass for any student from any device, request a pass for any teacher (requires teacher approval), and receive notifications prior to scheduled appointments.

Pass Kiosk

- Provide pass request and check-in access to students without school or personal devices.

Custom Reports

- Generate reports about who is requesting and granting passes to better understand use and misuse.

Auto Pass

- Allow students to check themselves in and out of the classroom without disruption.

Proxy Pass

- Give teachers the ability to create their own passes when students don't have a device.

*e-hallpass tracks when passes are granted to students, what locations they say they're going to, and when they arrive (the same amount of data a school would gather with paper hall pass tracking). It **does not** use device-based location data or any other location-tracking software or hardware.*

Manage student movement on your campus the easy way

With e-hallpass, you can improve student accountability, increase safety, and maximize instructional time.

Ready to see the power of e-hallpass for yourself? Request a personalized demo today.

[Request a demo](#)



✉ sales@securly.com

☎ 1-855-SECURLY

🌐 www.securly.com

©2023. Logos and trademarks are the property of their respective companies. All rights reserved.