



Simplify hall passes and strengthen campus safety



Traditional hall pass systems may have worked for years, but they fall short when it comes to meeting the needs of a modern school. If you need to account for students during a lockdown, for example, an outdated hall pass process will make it more difficult than it needs to be.

Or maybe you want to limit vaping and vandalism, or hold students accountable for missing instructional time. Either way, manual hall pass processes provide no way to combat or even collect data about these issues. You could try to add some type of tracking to your paper or other analog hall pass process, but this just creates more paper to keep track of and more work for teachers and staff.

With Pass, an electronic hall pass system designed for K-12 schools, administrators and teachers finally have an easier way to issue and track hall passes. Pass helps admins and teachers track how many passes are in use and by whom to improve student accountability and shore up safety concerns.

With Pass, you can:

- Know what students are using hall passes, and who's in the hall at any given time
- Identify where students are by building or room in an emergency situation
- Limit passes by student or location to minimize misuse
- Streamline appointment scheduling for teachers
- Regain control over hall pass usage to increase instructional time

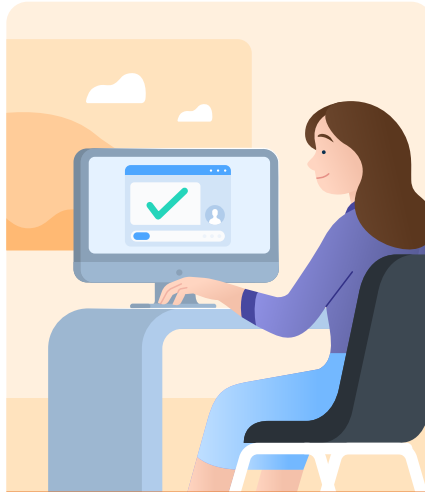
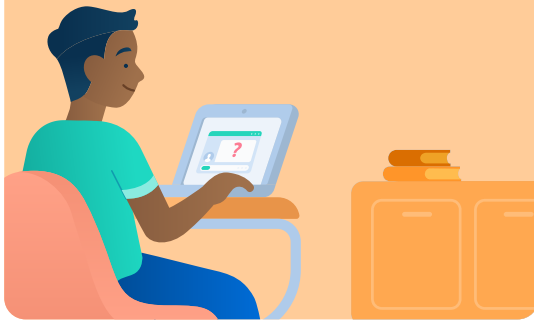
"Pass is a product that I honestly don't know how we would function without. With countless decisions to make throughout the day, Pass provides tools that allow our teachers and admin team to monitor our building effectively, increase our safety, have accurate data for decision-making, and have our pulse on movement throughout the building at a moment's notice."

Stacie Kegley

Instructional Coach, Ballyshannon Middle School

How Pass works

Students request a hall pass from a teacher from their school device, or their own device. pass automatically checks to see if the student has a pass limit, the requested destination is closed or full, or if there's another student in the halls that student isn't supposed to be in contact with.



Teachers can approve or deny passes in seconds, without disrupting their lesson.

School administrators can pull custom reports for pass takers, pass granter, and more to immediately know what students are going where, and how frequently.



Student View

NOW PASS
PASS LIMIT 9/9

APPOINTMENT PASS
5 REQUEST(S) AVAILABLE

Departing From:



Thomas
Teacher



Mike
Admin



Julie
Teacher



Ken
Teacher



Mel
Teacher

Destination



Boys
Restroom



Girls
Restroom



Water
Fountain



Nurse



Main
Office

SUBMIT

Students request passes by indicating where they're departing from and their destination

How Pass works

The screenshot shows the Pass Dashboard interface. At the top, there are tabs for 'My Passes', 'All Passes', 'Today's Appointments', 'Today's Awaiting Confirmation', and 'Future Awaiting Confirmation'. Below these are buttons for 'Pause Dashboard', 'Download CSV', and a search bar. A 'Basic View' toggle is set to 'On'. The main table displays pass information with columns for Student, Out time, In time, Total, Type, and Status/Comments. Two rows are highlighted: one for 'Cynthia Student3' with a 'WAITING APPROVAL' status and another for 'Natasha Student' with an 'ACTIVE' status. The 'Waiting Approval' row shows 'Brad Admin' and 'Girls 200 Hall Bathroom' with 'APPROVE' and 'CANCEL' buttons. The 'Active' row shows 'Brad Admin' and 'Nurse' with 'RETURNING' and 'END' buttons. A 'Headache' comment is visible in the 'Status/Comments' column for the active pass.

Student	Out time	In time	Total	Type	Status/Comments
Cynthia Student3 has 6 passes today	Brad Admin	Girls 200 Hall Bathroom		STU	0
Natasha Student has 3 passes today	Brad Admin 2:56 PM	Nurse 2:58 PM Nurse Kelly		TCH	1 Headache

Passes that are **Waiting Approval** can be approved or denied by the teacher

Passes that are **Active** will show their time stamp information on the teacher dashboard

Benefits

- Improve campus safety by knowing who is out of class and where they're going
- Maximize instructional time by reducing unnecessary hall pass usage and class interruptions
- Keep students accountable for their hall pass usage and reduce vandalism, mischief, and vaping
- Better investigate bullying and vandalism by knowing which students were out of class during a specific time period
- Know which students are out of class and where they are in emergency situations
- Simplify record-keeping for teachers, front desk staff, and administrators

Features

Student Pass Limits

- Give all students a daily pass limit, set different limits per grade level, or restrict individual students for disciplinary reasons.
- Prevent specific students or groups of students from being out of class at the same time.

Location Pass Limits

- Prevent students from going to rooms that are full, or when teachers or resources are unavailable.

Live Dashboard

- Know who's out of class with an automatically updating dashboard.
- Identify students who are out of class for extended periods.

Appointment Passes

- Make it easier for teachers to schedule student appointments.
- Schedule a pass for any student from any device, request a pass for any teacher (requires teacher approval), and receive notifications prior to scheduled appointments.

Pass Kiosk

- Provide pass request and check-in access to students without school or personal devices.

Custom Reports

- Generate reports about who is requesting and granting passes to better understand use and misuse.

Auto Pass

- Allow students to check themselves in and out of the classroom without disruption.

Proxy Pass

- Give teachers the ability to create their own passes when students don't have a device.

SIS Integration

- Coming Soon: A new way to provision users directly from your Student Information System (SIS) into Pass.

Pass Features

Tardy Management

Allow your school to easily track and manage tardy events, automate consequences, and gain a comprehensive overview of student tardiness trends.

Visitor Management

Automate your visitor check-in process, and keep your students and staff safe by screening every person entering your school.

Enhanced Reporting

Gain advanced reporting capabilities with no limitation on results to perform deeper analysis of pass usage.

Pass tracks when passes are granted to students, what locations they say they're going to, and when they arrive (the same amount of data a school would gather with paper hall pass tracking).

It does not use device-based location data or any other location-tracking software or hardware.

Manage student movement on your campus the easy way

With Pass, you can improve student accountability, increase safety, and maximize instructional time.

Ready to see the power of pass for yourself? Request a personalized demo today.

Request a demo

